



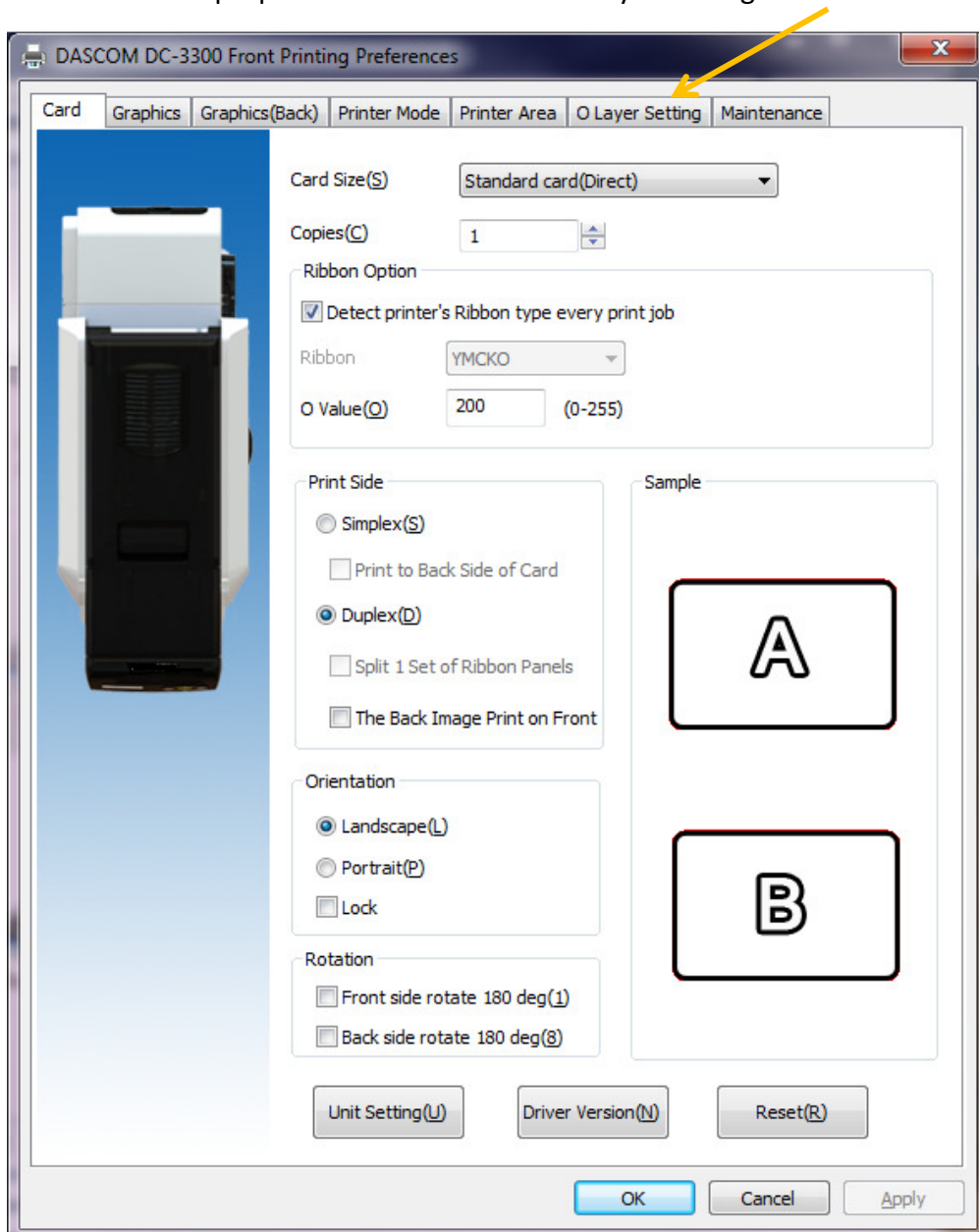
DASCOM Americas
34 Lakeview Drive
Verona, Virginia 24482
(877) 434 1377

DC-3300 – Adding a Watermark to the Printers Driver

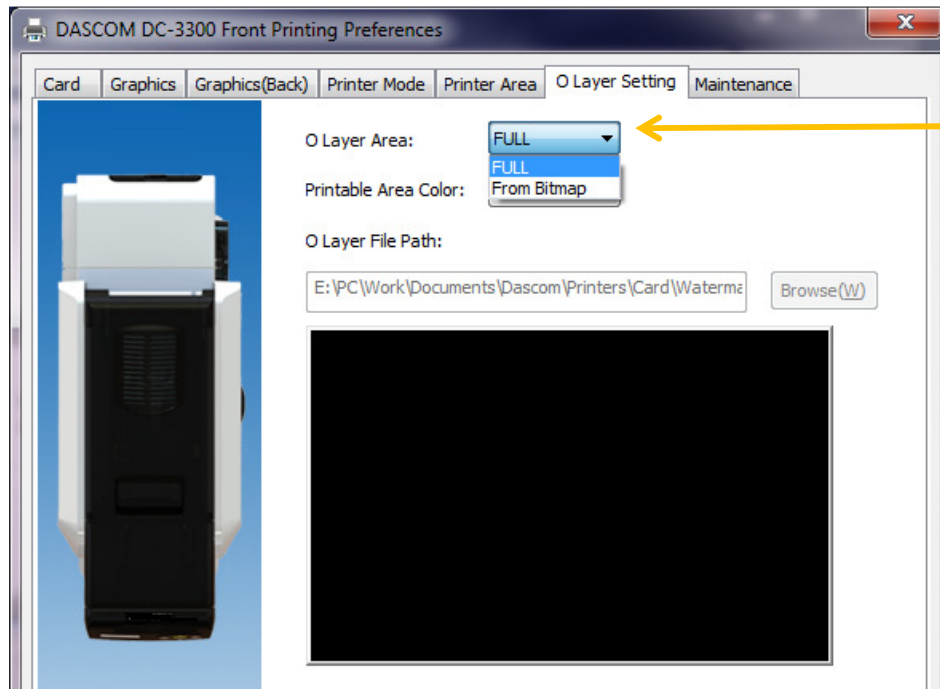
A watermark is an identifying image or pattern in an image that appears as various shades of lightness/darkness when viewed by transmitted light (or when viewed by reflected light, atop a dark background), caused by thickness or density variations in the image.

To add a Watermark, so that it is printed when using the Dascom DC-3300, the watermark can be added into the DC-3300 Driver and here is how –

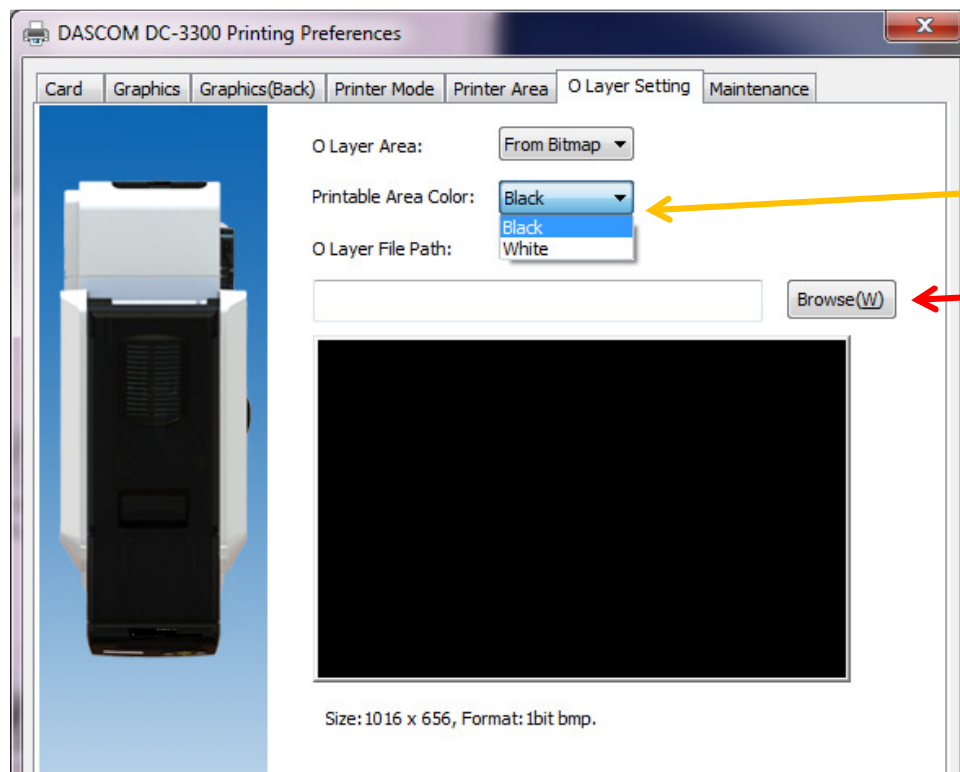
Open the DC-3300 Printer Driver properties and click on the O Layer Settings tab



On the O Layer Area parameter, click the dropdown and select **From Bitmap**



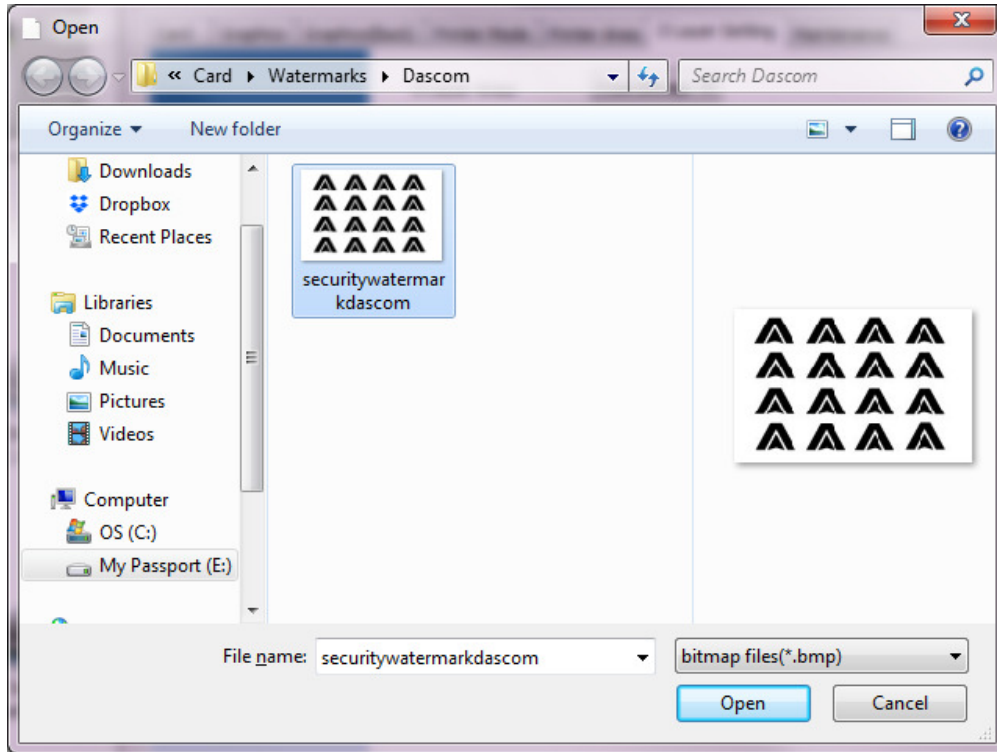
Select the **color** of the Watermark then click on the BROWSE button to locate the desired Watermark –





DASCOM Americas
34 Lakeview Drive
Verona, Virginia 24482
(877) 434 1377

Select the Watermark you want to add then click OPEN –



The Watermark should be visible in the Preview Window and now available to be printed onto the next card.

