



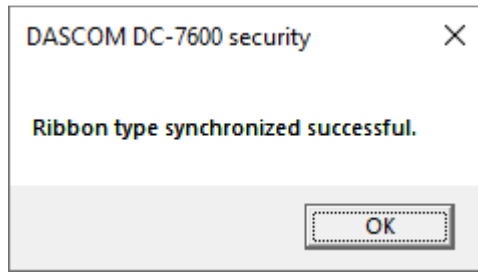
DASCOM Americas
34 Lakeview Drive
Verona, Virginia 24482
(877) 434 1377

DC-7600 – Adding a Watermark to the Printers Driver

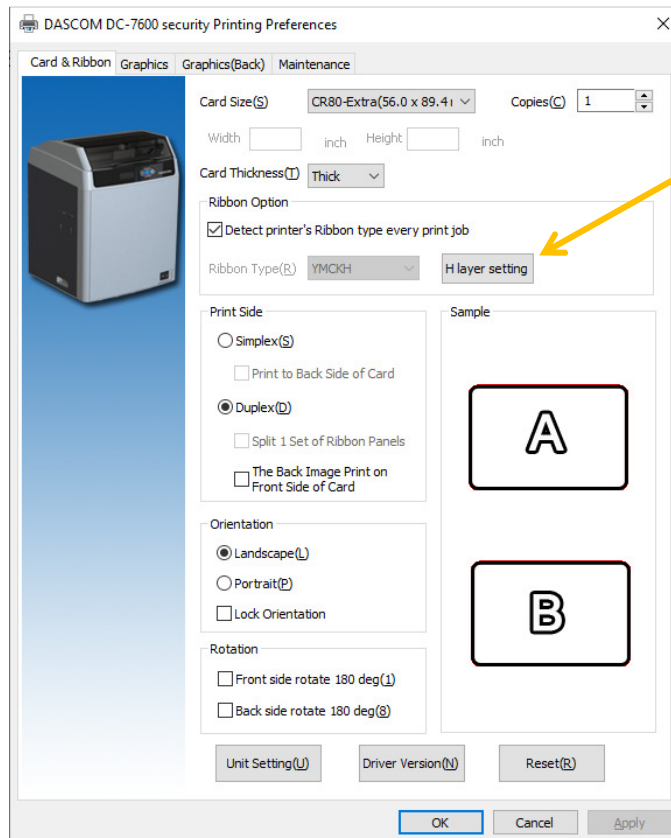
A watermark is an identifying image or pattern of an image that appears as various shades of lightness/darkness when viewed by transmitted light (or when viewed by reflected light, atop a dark background), caused by thickness or density variations in the image.

To add a Watermark, so that it is printed when using the Dascom DC-7600, the watermark can be added into the DC-7600 Driver and here is how –

With an YMCKH Ribbon installed and after the Printer displays that it recognizes the Ribbon



Open the DC-7600 Printer Driver Preferences and click on the H Layer Settings tab






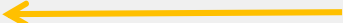
DASCOM Americas

34 Lakeview Drive
Verona, Virginia 24482
(877) 434 1377

On the H Value parameter, select the intensity value desired (255 heaviest – 1 lightest) then click on the Coverage Areas of H Layer to change it from All to Bitmap define

DASCOM DC-7600 security_H layer setting


H Value(H) (0~255)

Coverage areas of H layer:  

Bitmap's colors as coverage:

Path of custom bitmap file for define H

Output



Click on the **BROWSE** button to locate the desired Watermark –


DASCOM DC-7600 security_H layer setting

H Value(H) (0~255)

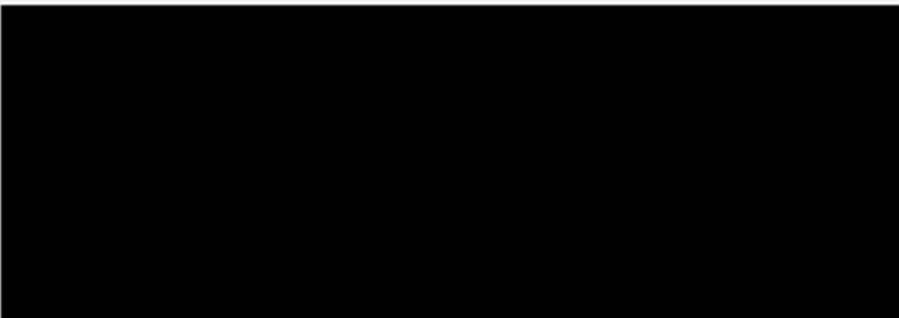
Coverage areas of H layer:

Bitmap's colors as coverage:

Path of custom bitmap file for define H



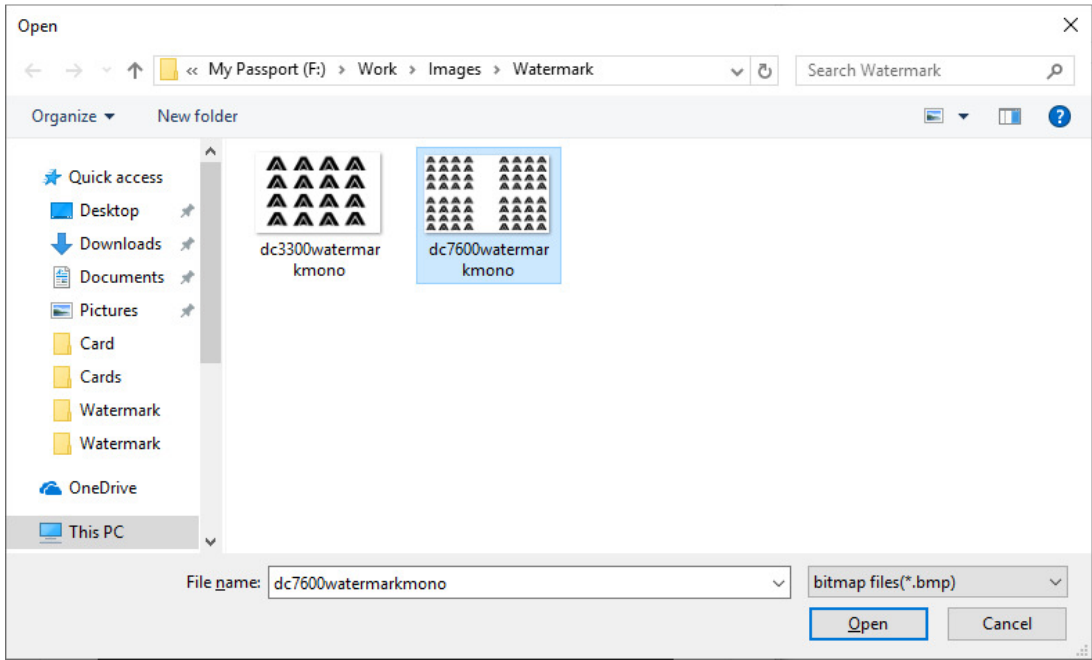
Output





DASCOM Americas
34 Lakeview Drive
Verona, Virginia 24482
(877) 434 1377

Select the Watermark you want to add then click OPEN –



The Watermark should be visible in the Preview Window and now available to be printed onto the next card.

